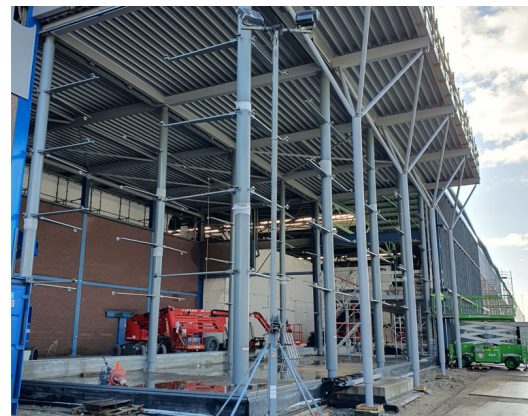
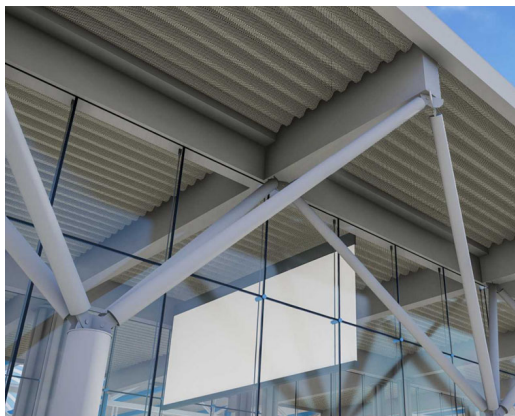


VAN LEEUWEN EXPERIENCE CENTRE

Architect
Client
Location
Year

LUGTEN MALSCHAERT ARCHITECTEN
VAN LEEUWEN BUIZEN GROEP
ZWIJNDRECHT (THE NETHERLANDS)
2024

8037



A new transparent glass showroom will welcome visitors to the Van Leeuwen Buizen Groep in Zwijndrecht. From this light-flooded location, visitors have a direct view of the advanced transport and sorting system in the impressive warehouse. Octatube is realizing the supporting structure and facades of this new experience center. To make room for the experience center, a part of the warehouse wall will be demolished. The concrete bumper will be retained. Against it, we are erecting a rectangular glass extension 23 meters wide,

8 meters deep and 10 meters high. The supporting structure of the glass facades consists of silver-gray powder-coated tubular columns. The three glass facades with a total area of 545 m² consist of 132 panels of laminated double glass. We fasten the glass panels together at the corner points with round nodes. These nodes are connected to steel swords that are attached to the tubular supporting structure. The tubes of the support structure are special: they are produced with a low CO₂ footprint.

octatube